

nyle

Dry Kilns

Efficiency. Quality. Speed. Performance. Outcome.

NDK 2.0R

Starting at \$7,900

The NDK 2.0R controls package was designed for kiln operators by kiln operators and is capable of being installed on any kiln from any manufacturer. Our newest platform encompasses the company's goals of creating energy-efficient solutions for kiln drying, all while applying advanced functionality to reduce drying time without compromising quality.

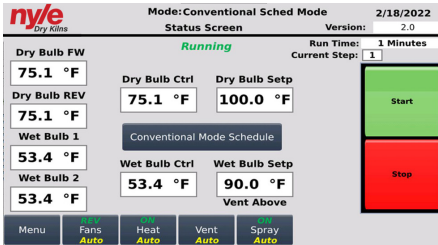
FEATURES

- Electronic Wet Bulb/Dry Bulb
- Mobile/Web-Based Controls
- Two RTD Probes
- Advanced Scheduling System



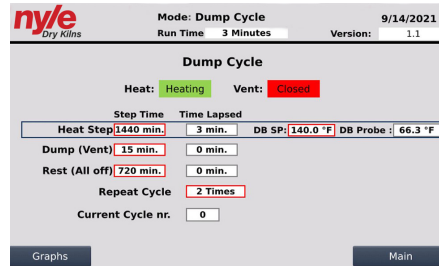
www.nyle.com - kilnsales@nyle.com - (800) 777-6953

Operation Modes



Conventional Mode

This mode utilizes a controlling dry bulb for temperature control and a wet bulb reading for venting the kiln or adding moisture.



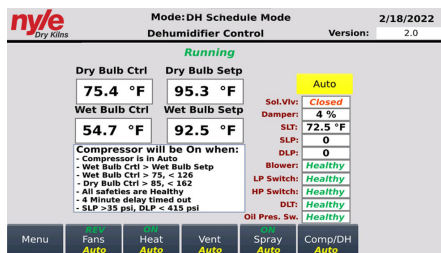
Dump Cycle Mode

Dump cycle mode This will run a time based Heat, dump, rest cycle with multiple repeats to get thick slabs down from 15% to 8% or less.



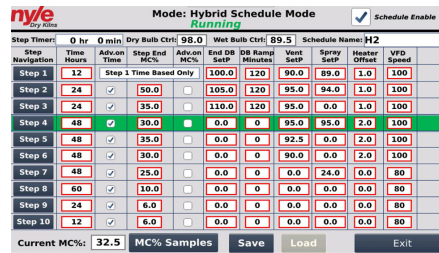
Heat Treat Mode

In this mode when target temperature (settable) is reached and maintained for required time (settable) the kiln stops automatically



DH Mode

This mode is more suitable for drying slow drying hardwoods like oak. In this mode the kiln is controlled according to traditional DH operation.



Hybrid Mode

This mode is more suitable for faster drying species. In this mode the kiln is controlled more according to traditional / conventional drying practice while using a dehumidifier.

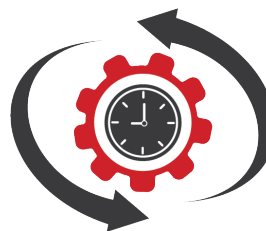
Features



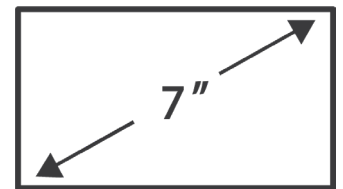
Remote Access



Data Logging



Flexible Scheduling



7" Screen