

Dry Kiln Equipment Catalog



nyle
Dry Kilns

Table of Contents

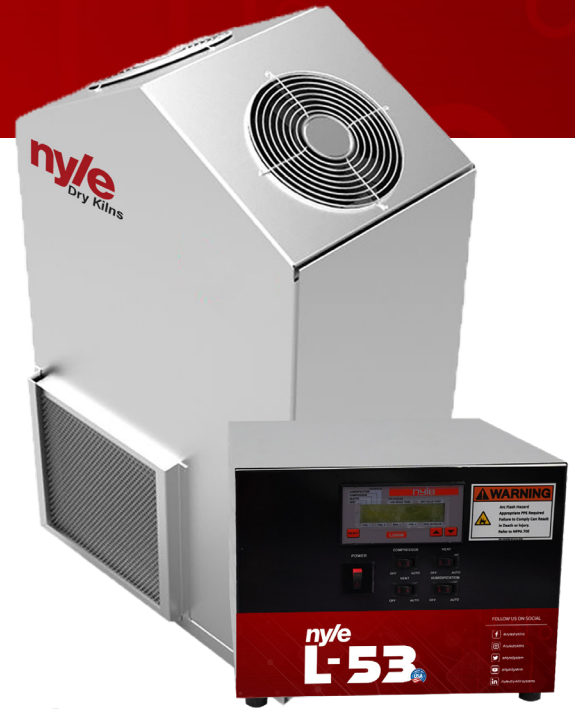
L53	1
L200	2
L200 Pro	3
L200 Pro Chamber Kit	4
L200 Pro Container Kilns	5
Dehumidification Kilns	6
Conventional Kilns	8
NDK 2.0R Kiln Controls	10
Atomizing Spray System	11
Heat Recovery Venting	12
Firewood Kit	13
Heat Treating Systems	14
The Kiln Store	16
Kiln Services	17



L53

Quality lumber drying is now more affordable and easy to accomplish with Nyle's L53. The compact, high-performance dehumidification system will dry between 300 and 1000 board feet of lumber.

The L53 comes with two internal fans, kiln control, and a powered vent kit. Whether you are a serious hobbyist or an accomplished professional, the L53 delivers superb results load after load.



Starting at

\$3,995

Specifications

Load Capacity	For softwoods and fast drying hardwoods (Pine or Poplar) 300 - 400 BF For slow drying hardwoods (Oak) 1,000 BF
Nominal Water Removal	60 lbs (27 kg) per 24 hours
Drying Time	4/4 Green Pine - 80% to 8% in approximately 12 days. 4/4 Green Oak - 65% to 8% in approximately 35 days.
Drying Temperature Range	70° - 120° F (21° - 49° C)
Heat Treating Capabilities	Auxiliary heater can be used to set the pitch, sterilize the load (kill bugs) and for preheating. (up to 160° F)
Compressor Nominal HP	1/2 HP
Internal Blower Motors	2 Internal Fans; 50 watts each, 850 cfm
Auxiliary Heat	1,000 watts
Over Temperature Vents	One power vent system included (includes exhaust and intake)
Power Requirements	120V, 60 Hz, Dedicated 15A Required
Shipping Weight	175 lbs
Dimensions (H x L x W)	37 1/2" x 22" x 14 1/2" (base unit only)

L200

Nyle's L200 models allow you to dry your lumber down to 6-8% moisture content for pennies per board foot. These compact, high-performance dehumidification systems will dry between 1,500 and 4,000 board feet of lumber.

Available in two options, the L200S includes two circulating fans, kiln control, and a powered vent kit. While the L200M adds upgraded controls with moisture probes.



Starting at

\$7,495

Specifications

Load Capacity	For softwoods and fast drying hardwoods (Pine or Poplar) 1,500 - 2,500 BF For slow drying hardwoods (Oak) 4,000 BF
Nominal Water Removal	250 lbs (114 kg) per 24 hours
Drying Time	4/4 Green Pine - 80% to 8% in approximately 12 days. 4/4 Green Oak - 65% to 8% in approximately 35 days.
Drying Temperature Range	70° - 120° F (21° - 49° C)
Heat Treating Capabilities	Auxiliary heater can be used to set the pitch, sterilize the load (kill bugs) and for preheating. (up to 160° F)
Compressor Nominal HP	2 HP
Internal Blower Motors	1/3 HP; 1,800 cfm
Auxiliary Heat	4,000 watts
Circulating Fans	Two included: 16" 1/3 HP / 1,800 cfm
Over Temperature Vents	One power vent system included (includes exhaust and intake)
Power Requirements	240V single phase, 60 Hz, Dedicated 40A Required
Shipping Weight	380 lbs
Dimensions (H x L x W)	37" x 32 1/2" x 20 1/2" (base unit only)

L200 Pro

The L200PRO takes low-temperature, small kilns to a new level. Nyle's L200PRO model brings the same great technology and drying control as our large kilns. This high-performance dehumidification system offers four different operation modes; traditional DH, Hybrid DH, Heat Treating, and Dump Cycle.

The advanced controller sports an electronic dry bulb and wet bulb sensor. Data logging, scheduling, and remote access are also capable, thanks to the L200PRO's enhanced controls.

The L200Pro comes with four circulating fans, PRO control, and a powered vent kit.

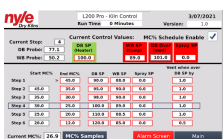


Starting at

\$12,995

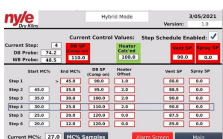
L200 Pro Controls

Four Modes of Operation



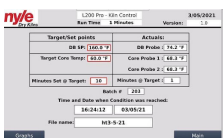
DH Mode

This mode is more suitable for drying slow drying hardwoods like oak. In this mode the kiln is controlled according to traditional DH operation.



Hybrid Mode

This mode is more suitable for faster drying species. In this mode the kiln is controlled more according to traditional / conventional drying practice.



Heat Treat Mode

In this mode when target temperature (settable) is reached and maintained for required time (settable) the kiln stops automatically.



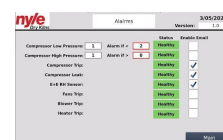
Dump Cycle Mode

Dump cycle mode This will run a time based Heat, dump, rest cycle with multiple repeats to get thick slabs down from 15% to 8% or less.



Graphing

Complete list of graphs showing you everything from probe values to Heat Treatment & general process logs



Alarming

Catch issues before they become costly

L200 Pro Chamber Kit

The L200 Pro chamber features four fans and a power vent for intake and exhaust. Measuring 16 ft. wide by 8 ft. high, this chamber is capable of drying 3,000 - 4,000 BF of 4/4 green oak in 4 to 5 weeks.

This package includes an L200 Pro DH Unit, Pro control, four circulating fans, a powered vent kit, and a prefabricated chamber.

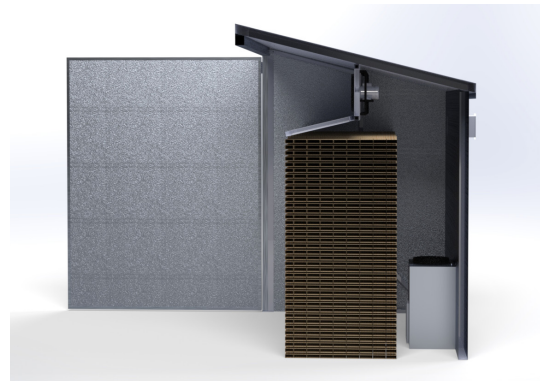


Starting at

\$38,695

Specifications

Number of Fans	4
Fan HP	1/3
Load Space	16' W x 4' D x 8' H
Maximum Chamber Capacity	4,000 board feet
Chamber Dimensions	16' 6" W x 10' D
Chamber Construction	4" insulated aluminum
Power Requirements	240V single phase, 60 Hz, Dedicated 100A Required
Shipping Weight	2,000 lbs
Shipping Dimensions	11' 8" x 4"
Build Time	4 - 5 days



L200 Pro Container Kilns

The L200 Pro container kiln packages combine our well-known, high-quality drying systems with a 20 or 40 foot insulated shipping container and everything needed to make a top-quality drying kiln.

This package includes an L200 Pro DH Unit, Pro control, circulating fans, a powered vent kit, and a container.



Starting at

\$46,995

Specifications

Container Size	20 ft	40 ft
Hardwood Capacity (oak)	2,300 board feet	4,000 board feet
Mid- Hardwood Capacity (mahogany)	2,000 board feet	2,000 board feet
Softwood Capacity (Pine)	1,500 board feet	1,500 board feet
Kiln Carts & Track	4 carts, 50' of track	8 carts, 90' of track
Number of Fans	4	8
Powered Vent Sets	1	2
Power Requirements	240V single phase, 60 Hz, Dedicated 100A Required	240V single phase, 60 Hz, Dedicated 120A Required
Shipping Weight	9,139 lbs	12,148 lbs
Shipping Dimensions	8' W x 20' D x 8.6" H	8' W x 40' D x 8.6" H



Dehumidification Kilns



Specifications

Unit	HT8	HT18	HT35
Load Capacity	4,000 - 15,000 BF	10,000 - 35,000 BF	15,000 - 50,000 BF
Nominal Water Removal (per day)	720 lbs (327 kg)	1,800 lbs (817 kg)	3,500 lbs (1,588 kg)
Drying Time	4/4 Green Pine 80% to 8% in approximately 8 days. 4/4 Green Oak 68% to 6% in approximately 28 days.		
Drying Temperature Range	80° - 160°F (26° - 71°C)		
Heat Treating Capabilities	Auxiliary heater can be used to set the pitch, sterilize the load (kill bugs) and for preheating.		
Compressor Nominal HP	5 HP	15 HP	25 HP
Internal Blower Motors HP	1.5 HP	3 HP	7.5 HP
Auxiliary Heat	12 KW	48 KW	96 KW
Over Temp Vents	Four (20"X20")		
Circulating Fans	Six 1/2 HP 24"	Four 2 hp 30"	Standard sizes of 36", 48", and 60" available

Nyle's HT-Series makes drying lumber simple, allowing even inexperienced operators to produce high-quality lumber. Operating at up to 160° F, these units match the drying speeds of conventional kilns.

Each unit comes standard with; corrosion-resistant aluminum cabinets, coated dehumidification coils, stainless steel cold coils, and Nyle's easy-to-use precision control systems.

Each Kiln is made to order and can be fitted to your existing chamber or built with a new chamber to suit your operation.



Starting at
\$37,995

HT 54	HT84	HT108	HT162
24,000 - 80,000 BF	38,000-120,000 BF	49,000 - 150,000 BF	73,000 - 225,000 BF
5,400 lbs (2,450 kg)	8,400 lbs (3,810 kg)	10,800 lbs (4,899 kg)	16,200 lbs (7,348 kg)
4/4 Green Pine 80% to 8% in approximately 8 days. 4/4 Green Oak 68% to 6% in approximately 28 days.			
80° - 160°F (26° - 71°C)			
Auxiliary heater can be used to set the pitch, sterilize the load (kill bugs) and for preheating.			
40 HP	2 X 30 HP	2 X 40 HP	3 X 40 HP
10 HP	2 X 7.5 HP	2 X 10 HP	2 X 15 HP
96 KW	96 - 192 KW	96 - 192 KW	192 - 288 KW
Four (20"X20")			

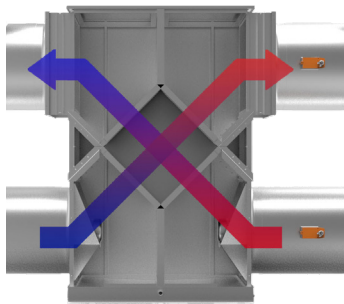
Standard sizes of 36", 48", and 60" available

Conventional Kilns

Capable of operating up to 250°F (120°C), our conventional kilns provide quality and economical options for those who live in an area with high electric costs or need a higher heat output. These systems are available in forklift or track kiln constructions and utilize precision controls and heat recovery venting to ensure superior efficiencies with top-quality results and shorter drying times.



Specifications



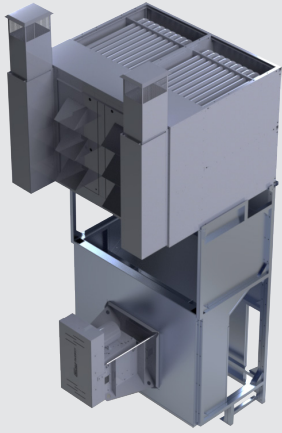
Heat Recovery Vent

All of our High Temperature kilns come equipped with our heat recovery venting system. Our HRV System offers a means to reclaim a portion of this lost heat. This process utilizes energy that would otherwise be wasted and minimizes the need for “reheating” while reducing overall fuel consumption by between 15-20%!



Precision Controls

Nyle has taken our 45 years of experience in the industry and created a control system that transforms how operators interact with their equipment. We set out two goals in mind; increase productivity and make the control easy to use.

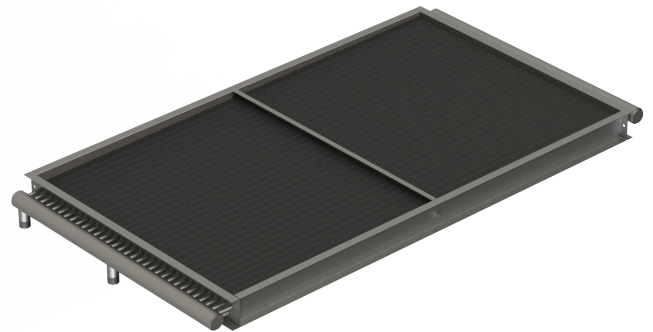


Indirect-fired Gas

Our indirect-fired gas burners are a low-cost economical alternative in areas where the electricity costs are high. Although a little more expensive, we only use indirect-fired systems for their higher safety rating and level of quality control.

Steam & Hot Water

Our quality engineered steam coils provide a cost-effective and flexible option for all your drying needs. These systems properly maintain the temperature in the kiln and boast the ability to be used for either lumber drying as well as heat treating.



High Temperature Kilns

Our High Temp track kilns are perfect for drying your Southern Yellow Pine, Poles, & Timbers. This system's 250°F operating capacity gives you the ability to dry in as little as three days with top-quality results. All of our High Temp systems offer turn-key installation with continued support from our legendary service department.

NDK 2.0R Controls

The NDK 2.0R controls package was designed for kiln operators by kiln operators and is capable of being installed on any kiln from any manufacturer. Our newest platform encompasses the company's goals of creating energy-efficient solutions for kiln drying, all while applying advanced functionality to reduce drying time without compromising quality.

The NDK 2.0R platform builds off of our years of experience controlling kilns and supports the following control modes to allow kiln operators to choose the preferred drying method on a per species basis:



Starting at

\$7,900

Operation Modes

DH Mode

This mode is more suitable for drying slow-drying hardwoods like oak. In this mode, the kiln is controlled according to traditional DH operation.

Conventional Mode

This mode utilizes a controlling dry bulb for temperature control and a wet bulb reading for venting the kiln or adding moisture.

Heat Treating Mode

In this mode, when the target temperature (settable) is reached and maintained for the required time (settable), the kiln stops automatically.

Hybrid Mode

This mode is more suitable for faster drying species. In this mode, the kiln is controlled more according to traditional/conventional drying practice while using a dehumidifier.

Dump Cycle Mode

Dump cycle mode This will run a time-based Heat, dump, and rest cycle with multiple repeats to get thick slabs down from 15% to 8% or less.



Atomizing Spray System

Nyle has created an Atomizing Spray System, which adds humidity into the air inside a kiln chamber.

During a kiln drying cycle, vents and dehumidification systems are used to remove moisture from a kiln chamber, allowing the moisture from the wood to be removed.

A certain relative humidity or wet-bulb depression is always trying to be accomplished in order to dry each load of wood properly. If moisture in a chamber is removed too quickly, it can deteriorate a load of wood being dried.

Another reason for Nyle's Atomizing Spray System is for wood conditioning. During wood conditioning, moisture is added back to the surface of the wood at the end of the drying process to help reduce any stresses in the wood from the drying process.

The High-Pressure Spray System increases the wet bulb and maintains temperature while reducing the demand on a boiler as well as the need for boiler chemicals and make-up water.



Starting at

\$8,500

Specifications



Water Flow Rate	3.5 GPH per nozzle at 500 PSI
Number of nozzles	5-10 nozzles per bay
Unit Kiln Capacity	Each unit serves 2 kilns
Motor HP	3 HP
Dimensions	40" W x 24" D x 38" H
Weight	150 lbs
Power Requirements	480V three-phase 60Hz, 15A

Heat Recovery Vent

Nyle's focus has always been to support all Kiln owners and improve efficiency and productivity in lumber drying.

Heat loss through venting is one of the most notable downfalls of a conventional kiln. With venting necessary to remove the excess moisture, you are stuck with a considerable energy expenditure. This heat expenditure can significantly decrease your efficiency, increase your energy costs, and decrease degrade.

Our dynamic heat exchangers help recover energy lost during the drying process by transferring a large portion of the outgoing vented air's energy to the incoming air. This process utilizes energy that would otherwise be wasted, minimizing the need for "reheating" and reducing overall fuel consumption by a minimum of 15%.

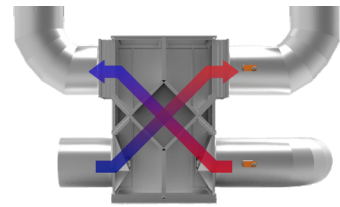


Starting at

\$26,995

Specifications

Unit	HRV 5000
Venting Capacity	5,000 CFM
Estimated Energy Savings	Saves up to 80% of Lost Heat
"Winter" Capacity (55°, 70% RH ambient)	305,502 BTU/hr
"Summer" Capacity (95°, 47% RH ambient)	116,568 BTU/hr
Intake/Exhaust Fan HP (at 1,800 RPM)	6 HP total with VFD
Static Pressure	2" (at 5,000 CFM)
Power Requirements	480V three phase, 30A
Venting BF Capacity (slow drying hardwoods)	60 MBF
Venting BF Capacity (mid-grade hardwoods)	40 MBF
Venting BF Capacity (fast drying softwoods)	20 MBF



Firewood Kiln Kit

Due to the rise in regulations on the drying and use of firewood, Nyle has created the "Do It Yourself" firewood kiln. This kit, paired with an existing outdoor hot water boiler, allows anyone to dry to the USDA-certified standards.

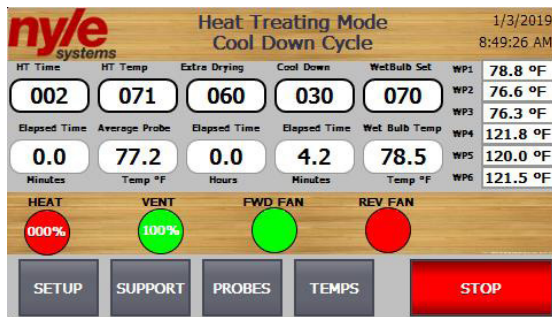
Nyle's "Do It Yourself" kit can dry and heat treat up to 4 cords of wood in each cycle. This Kit is a comprehensive package that includes all necessary components to build your Firewood Kiln effectively. All you need is a chamber and an existing outdoor hot water boiler.



Starting at

\$19,500

Specifications

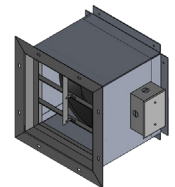


Controls

With this kit, you will receive Nyle's industry-leading controls to ensure each load is dried evenly and meets industry standards as well as all Certification requirements.



3 Hot Water Coils



4 Powered Vents



6 Fans (24" 1/2 hp)

Hot Water Coils (3) 250,000 BTUh at 25 GPM

Power Vents Four

Fans Six 24" 1/2 Hp

Power Requirements 240V single-phase 60Hz,

Chamber & firewood basket plans available upon request



Prefabricated
Firewood Baskets Available
Starting at \$1,995

Heat Treating Systems

Nyle has developed Heat Treating Systems that are adaptable, efficient, and easy to operate. A Nyle Heat Treating System can handle anything from pallets to firewood wood. The innovative flexible design of these units make modification and expansion easy when regulations or your needs change.

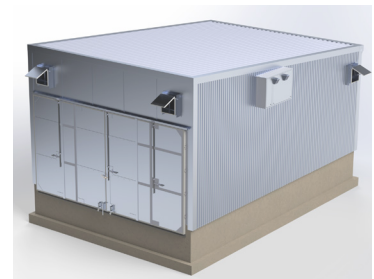
All our heat treating systems are outfitted with our indirect gas fired furnaces burning either natural gas or propane for high temperature heat treating and or extended drying capabilities. It's safer, more efficient and doesn't require a boiler.

Nyle offers 40' container & chamber packages manufactured with the highest quality materials to ensure that your time is spent making money, not repairs.



Specifications

	<u>PHT / FHT 350</u>	<u>PHT / FHT 660</u>
Load Capacity	350 Pallets / 6-8 Cords	660 Pallets / 20 Cords
BTUh	800,000	1,600,000
Number of Fans	One 36" 7.5 Hp	Four 30" 5 Hp
Number of Vents	Two duct vents	Four wall vents
Dimensions	8' W x 46' 3 1/4" D x 13' 8 5/16" H	19' W x 30' D x 10' 6" H
Power Requirements	240V three-phase 60Hz,	480V three-phase 60Hz,



Heat Treating Chambers

40' Container Packages

Nyle offers 40' container heat treating chambers. These chambers are fabricated from a 40' refrigerated shipping containers and contain everything that you need to start heat treating.

Prefabricated Chamber Packages

Don't want to build a heat treating Chamber? No problem! Nyle can build a chamber for you based on your needs. Nyle's prefabricated chambers come in an extra wide design to make loading and unloading a breeze.

Prefabricated chamber packages arrive on site semi-assembled with a set of detailed plans for easy setup. All you need is a concrete slab to put it on.



Controls

Our Heat Treating control system provides you with all the tools to ensure proper and efficient heat treating every cycle.

The control systems allows for full control over the set-points and climate during the cycle even automatically turning off the equipment when heat treating has been completed.

Automatic recording allows the user to generate printable reports for certification and shipping requirements.

nyle Dry Kilns 3/25/2020
8:15:32 PM

Start Up Screen

Step 1: Enter Log File Name
Data Log File Name:

*Note Use Numbers or Letters Only!

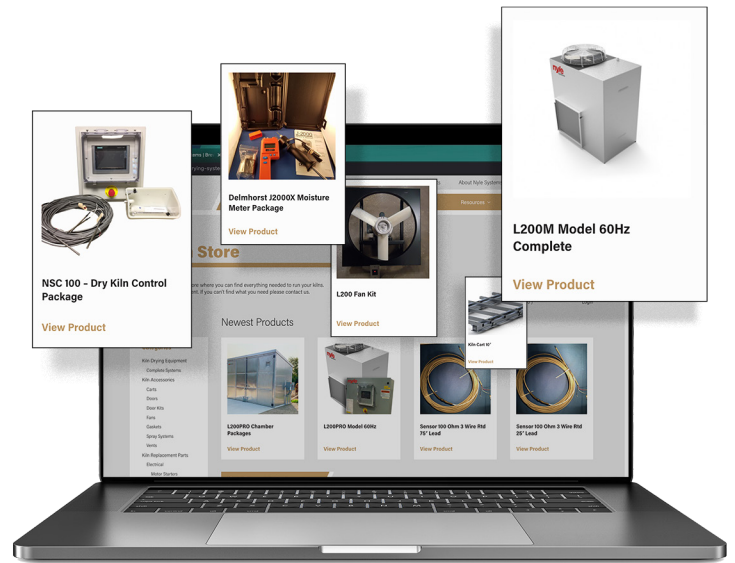
Step 2: Select Mode of Operation

Step 3: Additional Setup
Dry Bulb Set: Temp °F
Wet Bulb Set: Temp °F

The Kiln Store

When you buy a kiln from Nyle you are not only getting the kiln, you are also receiving the famed Nyle Customer Support, which is rated to be the best in the business. At Nyle's Kiln Store you can find everything needed to run your kilns. Parts, supplies, and equipment to customize and modify your kiln, even if it is not made by Nyle.

If there is something you are looking for that is not listed, give us a call. We would be happy to assist you as we offer many more products not listed on our kiln store.



Looking for kiln parts?

- Kiln Drying Equipment
- Gas Heaters
- Moisture Probes
- Carts
- Electric Heaters
- Cables
- Doors
- Belts
- Sensors
- Door Kits
- Blower Wheels
- Sleeves
- Fans
- Distributor
- Wicks
- Gaskets
- Filters
- Valves
- Spray Systems
- Replacement Coils
- Motor Accessories
- Vents
- Kiln Replacement Parts
- Controls
- Moisture Meters
- Electrical
- Motor Starters

Visit The Kiln Store



Kiln Services

Nyle's Kiln Services is a multi-faceted program for sawmills that combines a full kiln audit with a customized expert training, continued support and advanced services designed to maximize each kiln to the highest rate of efficiency and lowest cost of operation.

We believe that all companies want to improve and can improve but don't always have a way to make it happen. Nyle is ready to help and up for the challenge.



What's Included



A comprehensive analysis including thermal imagery scanning of each dry kiln.



The course will be completely customized to fit the needs of the company



The course is designed for up to 10 individuals involved in the kiln drying process.



Nyle will help each company to develop new standard operating procedures.



Companies will also receive a detailed report including recommendations on how to optimize their kilns.



Continued support available through our Dry Kiln Service Agreements.



Contact Us

Address: 12 Stevens Road
Brewer, Maine 04412

Phone (800) 777-6953

E-mail: kilnsales@nyle.com

Website: www.nyle.com

