



**nyle**  
Dry Kilns



**Efficiency. Quality. Speed. Performance. Outcome.**

Rev 2022.02

## L200PRO Unit

**Starting at \$12,995**

The L200PRO takes low-temperature, small kilns to a new level. Nyle's L200PRO model brings the same great technology and drying control as our large kilns. This high-performance dehumidification system offers four different operation modes; traditional DH, Hybrid DH, Heat Treating, and Dump Cycle.

The advanced controller sports an electronic dry bulb and wet bulb sensor. Data logging, scheduling, and remote access are also capable, thanks to the L200PRO's enhanced controls.

The L200Pro comes with four circulating fans, PRO control, and a powered vent kit.



[www.nyle.com](http://www.nyle.com) - [kilnsales@nyle.com](mailto:kilnsales@nyle.com) - (800) 777-6953



Rev 2022.02



# Specifications

## Operation Modes

<b>Load Capacity</b>	For softwoods and fast drying hardwoods (Pine or Poplar) 1,500 - 2,500 BF, For slow drying hardwoods (Oak) 4,000 BF
<b>Nominal Water Removal</b>	250 lbs (114 kg) per 24 hours
<b>Drying Time</b>	4/4 Green Pine - 80% to 8% in approximately 12 days. 4/4 Green Oak - 65% to 8% in approximately 35 days.
<b>Drying Temperature Range</b>	70° - 120° F (21° - 49° C)
<b>Heat Treating Capabilities</b>	Auxiliary heater can be used to set the pitch, sterilize the load (kill bugs) and for preheating. (up to 160° F)
<b>Compressor Nominal HP</b>	2 HP
<b>Internal Blower Motors</b>	1/3 HP / 1,800 cfm
<b>Auxiliary Heat</b>	4,000 watts
<b>Circulating Fans</b>	Four included: 16" 1/3 HP / 1,800 cfm
<b>Over Temperature Vents</b>	One power vent system included
<b>Power Requirements</b>	240V single phase, 60 Hz, Dedicated 100A Required
<b>Shipping Weight</b>	420 lbs
<b>Dimensions (H x L x W)</b>	37" x 32 1/2" x 20 1/2" (base unit only)

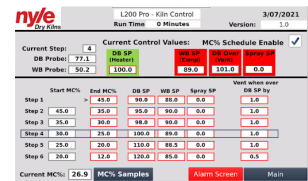
### L200Pro Accessories:



**Fan Kit:**  
Fully automated fan kit includes 16" housings, fan blade, 1/3 HP motor, and motor starter.

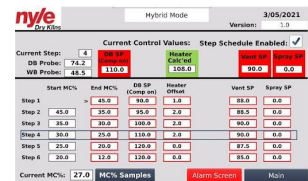


**Chamber/Container Kilns:**  
Prefabricated chamber and container packages available.



### DH Mode

This mode is more suitable for drying slow drying hardwoods like oak. In this mode the kiln is controlled according to traditional DH operation.



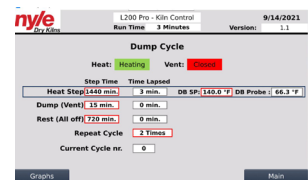
### Hybrid Mode

This mode is more suitable for faster drying species. In this mode the kiln is controlled more according to traditional / conventional drying practice.



### Heat Treat Mode

In this mode when target temperature (settable) is reached and maintained for required time (settable) the kiln stops automatically



### Dump Cycle Mode

Dump cycle mode This will run a time based Heat, dump, rest cycle with multiple repeats to get thick slabs down from 15% to 8% or less.